



Smart Emergency module

E02(Non-maintained)



IP65



IK06



1 years warranty



Features

- IP65 / IK06
- Up to 400Lm
- >3 hours emergency power
- Fast fit and zero maintenance
- Automatic Detection
- Battery changeable



Parameter

Model NO.	Power (W)	Lumens	Emergency time
E02	3	400	≥3H

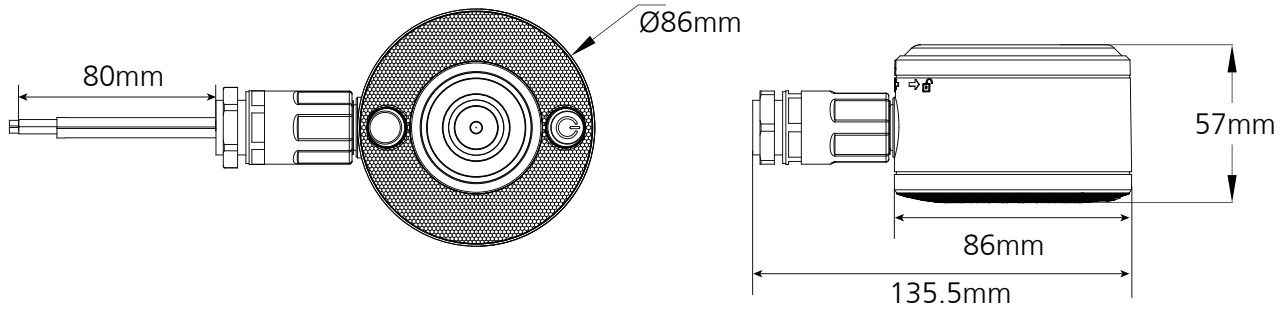
Automatic Detection

The Emergency Module Tests Itsself Regularly

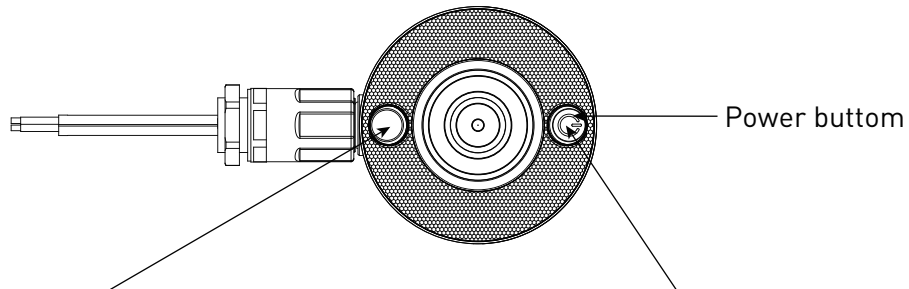
Cycle	The test time
30 days	10s
180days	90min

Battery type	Lithium Battery
Charge Power	3W
Current capacity	2200mAh 7.4V
Input voltage	AC220~240V 50~60Hz
Charge time	≥10H
Discharge time	≥3H
Lifetime	≥300 times cycle(25±5°C)
Operation temperature	-20~40 °C
Storage temperature	-20~45 °C

Product Dimension



Button&Indicator instruction



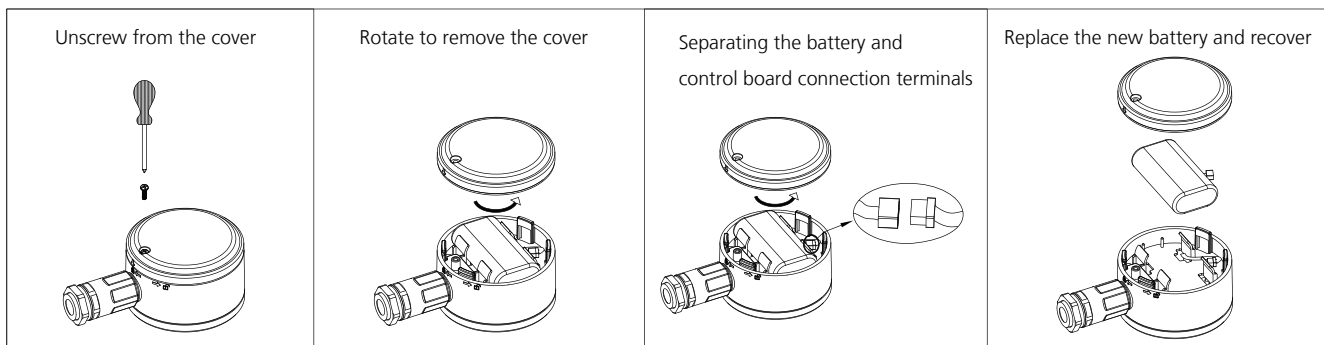
Indicator/Scene	Red color	Green color
Standby	/	On
Charging	On	/
Emergency	/	/
Failure	Flash	/
Battery Repair	Flash	Flash

Push Button/Scene	Function
Standby(with AC input)	Push button for load testing
Emergency	Push button over 1S for dormancy
Battery failure	Push button over 1S removing the fault

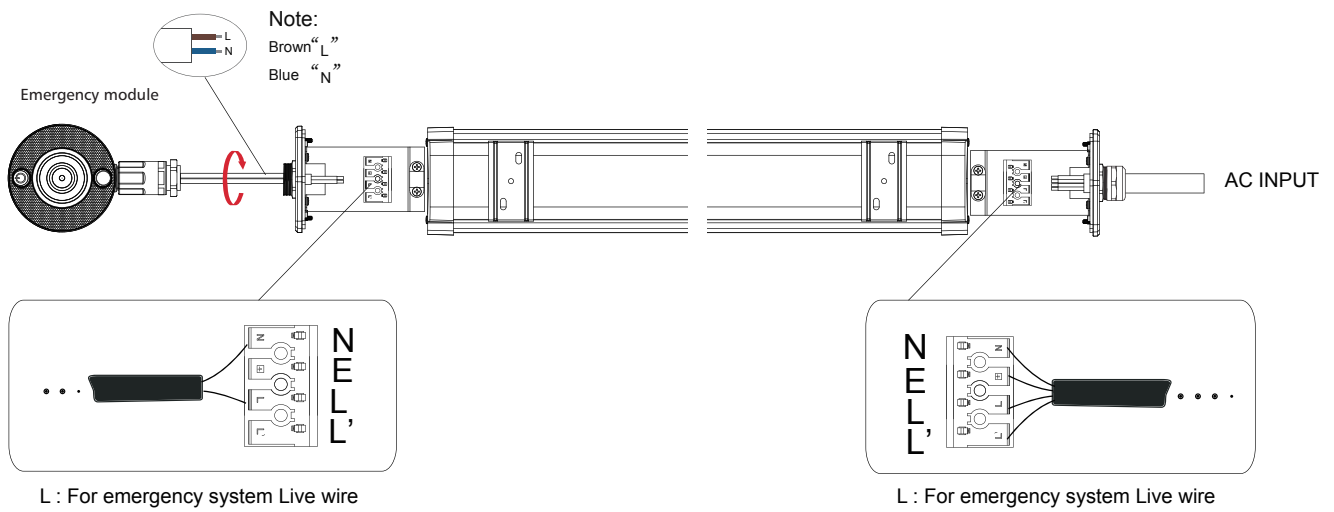


1. The battery is guaranteed for one year.
2. The battery needs to be charged once every 3 months, 12 hours each time.
3. After the battery is fully charged and the power is disconnected, the product is in an emergency state and the indicator light is on. At this time, you need to press and hold the power button on the product for about 3 seconds to turn off the light to avoid long-term discharge.

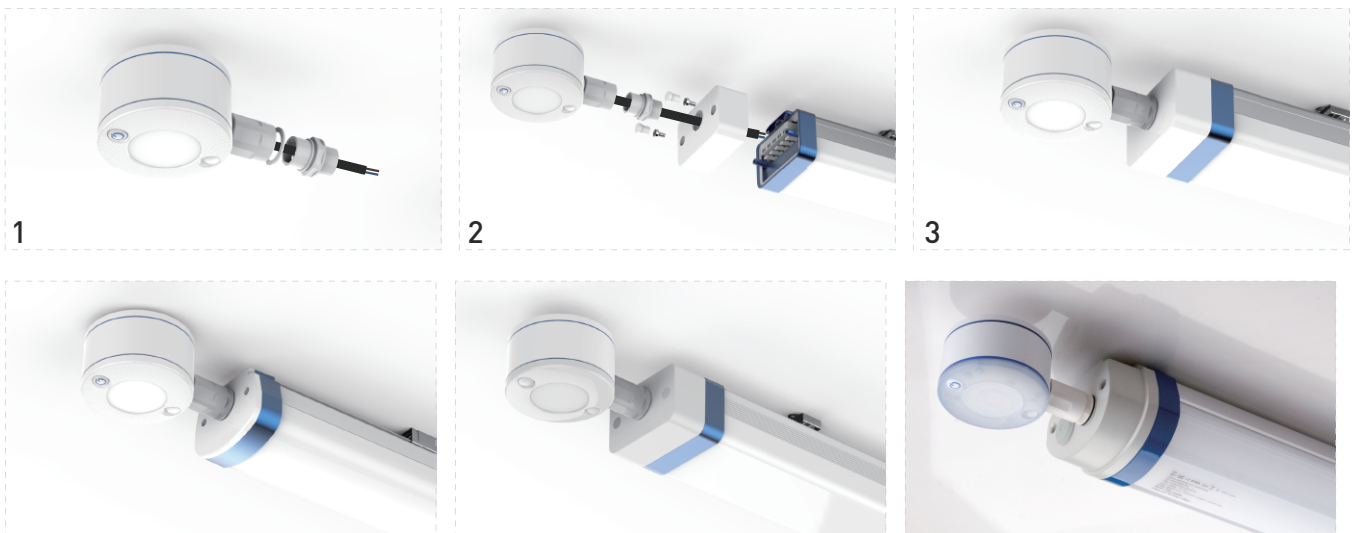
Battery changeable



Wire system



Installation



Packaging

Model No	Single Box	Pcs/CTN	N.W./Panel(kg)	G.W./CTN(kg)	Meas(mm)
E02	1	28	0.28	9.50	624*300*137

Attention

This specification is for reference only, we reserve the right to change without notice. If you need the updated info, please contact local distributors or visit our website at <http://www.ervan.cn>

ERVAN reserves the right of final explanation.